



HOME
QUALITY
DEVELOPERS

REFINED LIVING MADE SIMPLE

HARMONY



Tombs of the Kings, Paphos

Urban Living:
Elegance and Ease



- ▶ Harmony represents the pinnacle of modern apartment living. It boasts an eye-catching contemporary design focused on spacious, open-plan living. The development includes 2x one-bedroom apartments, 2x two-bedroom apartments, and 1x three-bedroom penthouse, all spread over three floors. Residents will enjoy highly desirable amenities such as a pool, covered parking, and sea views from select units.

Located in a prime and strategic area of Paphos, Harmony is just a few minutes' walk from the main road of Tombs of the Kings, AUB University, the sea, and various amenities. Yet, it's nestled far enough from the hustle and bustle to allow residents to enjoy the tranquility of birdsong and scenic balcony views.

Where
Comfort Meets
High Quality
Design



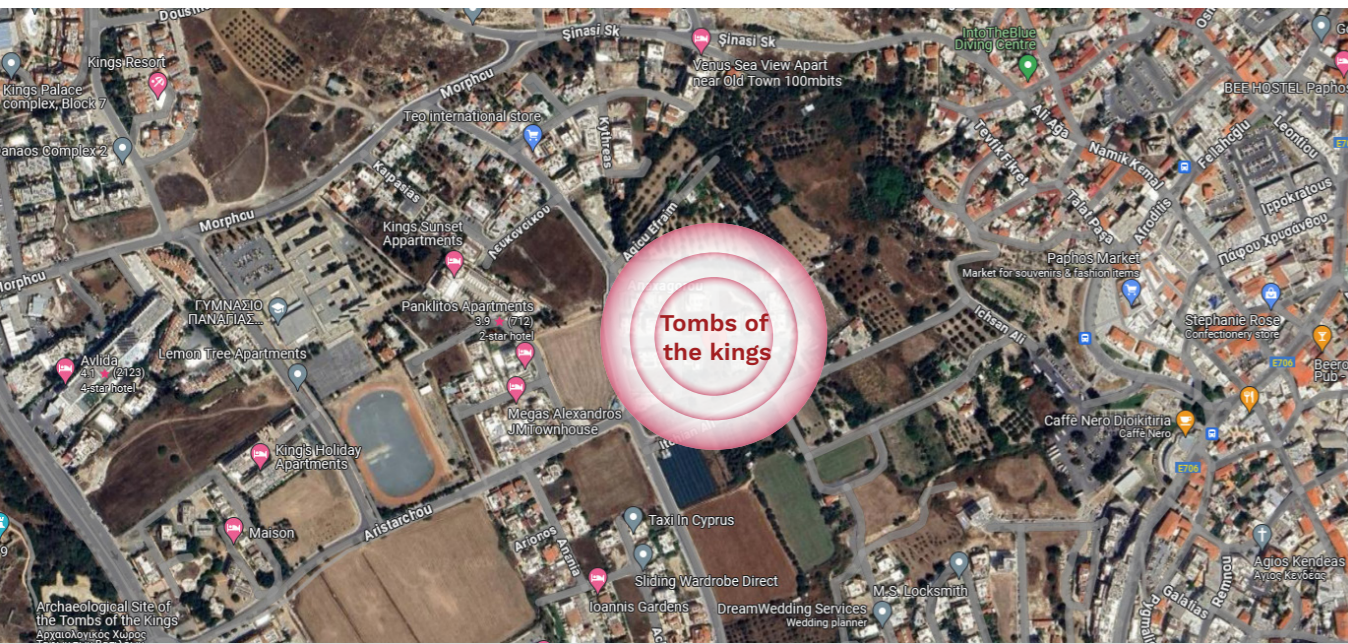


Features






- ENERGY EFFICIENCY BUILDING CLASS A
- COVERED PARKING
- SMART HOME
- SWIMMING POOL
- SEAVIEW
- GATED COMPLEX
- REMOTE CONTROLLED GATES
- VIDEO INTERCOM
- HIGH END FINISHES
- DESIGNER COMPLEX
- OPTIONAL CONCEALED VRV AIR-CONDITIONING
- OPTIONAL UNDERFLOOR HEATING

Contemporary
Elegance with
a Touch of
Luxury





Distances

	Sea:	700m
	Airport:	15km
	School:	3 minutes
	Center:	1.5km
	AUB University:	800m

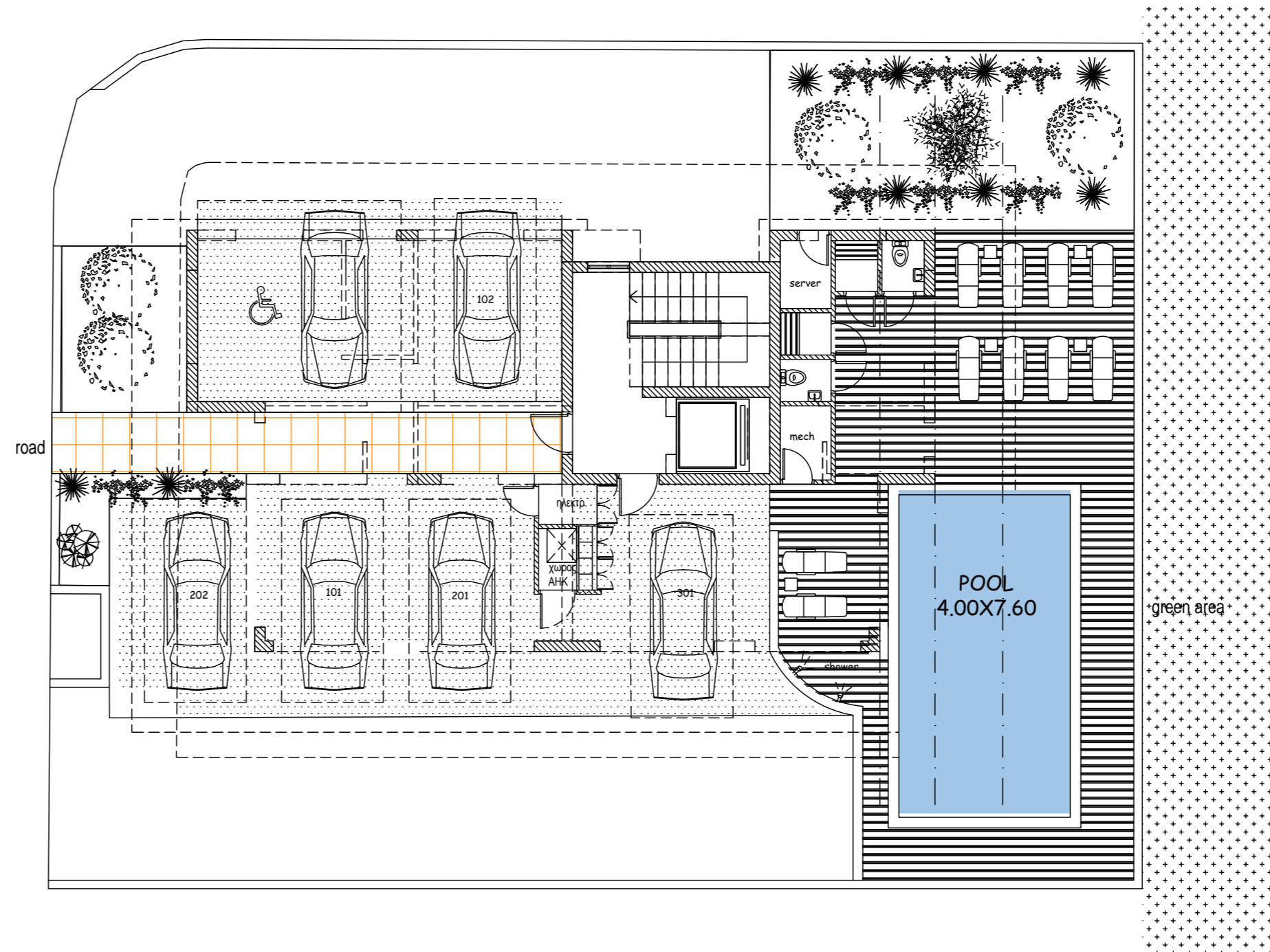
▶ Tombs of the Kings in Paphos is a great place to live, offering a mix of history, coastal beauty, and modern amenities. You can find various housing options, from apartments to villas, surrounded by rich history.

The area has everything you need, like schools, supermarkets, and healthcare facilities. It's beautiful coastal setting is perfect for relaxing walks, stunning sunsets, and a peaceful atmosphere. With good transport links and close access to major roads, Tomb of the Kings makes it easy to get around and explore Paphos.



GROUND FLOOR

- Parking
- Server Room
- Swimming Pool



101.40 m²

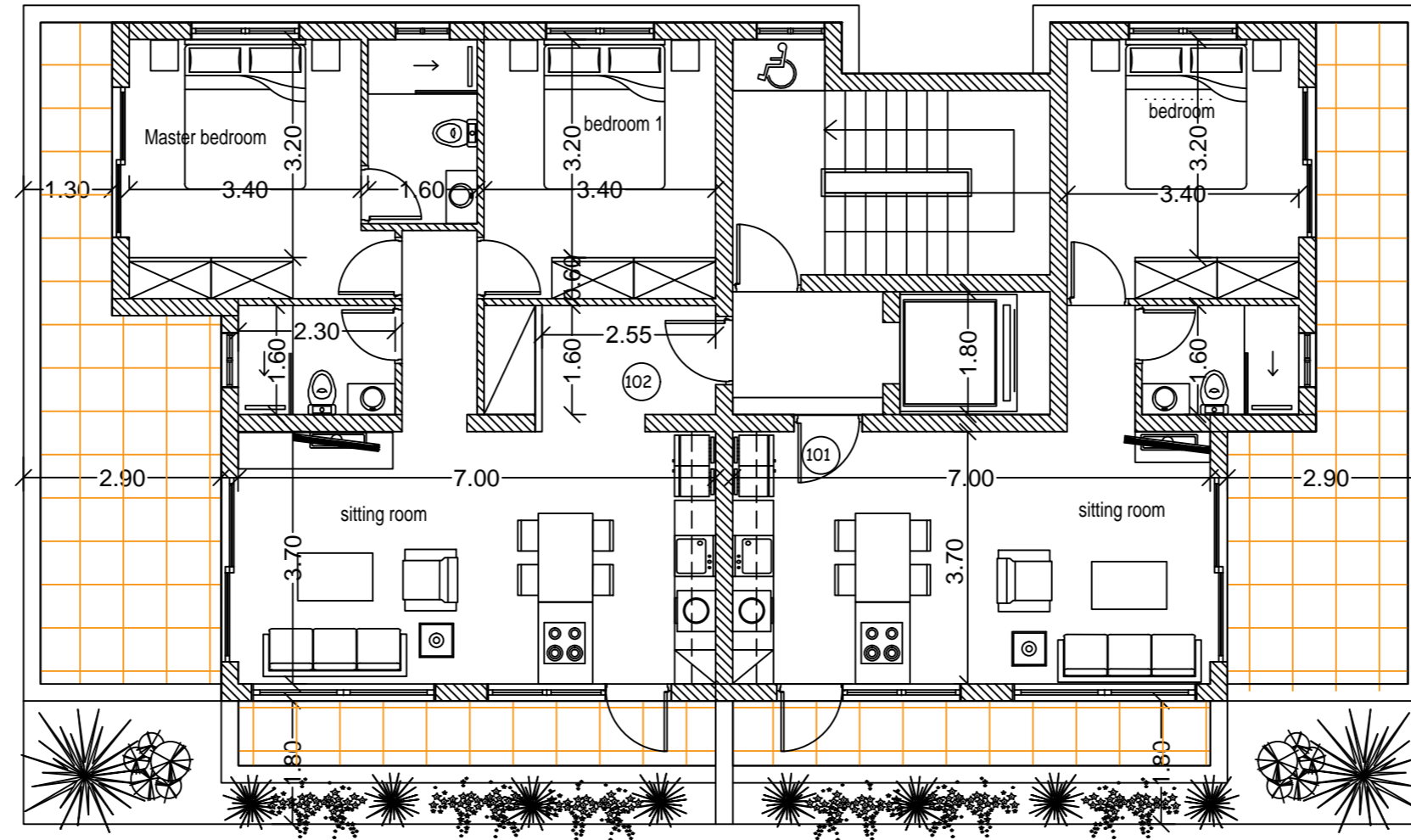
Living 80.48 m²
Veranda 20.92 m²

Flat 102

First Floor

2 Bedrooms/ 2 Bathrooms Covered Parking

Master Bedroom	3.80x3.40
• En-suite	1.60x2.70
Bedroom 1	3.80x3.40
Living	3.80x3.70
Kitchen & Dining	3.10x3.70
Guest Bathroom	1.60x2.30
Balcony	5.40x2.90, 7.00x0.95



1 Bedroom/ 1 Bathroom Covered Parking

Bedroom	3.80x3.40
Living	3.10x3.70
Kitchen & Dining	3.90x3.70
Bathroom	1.60x2.30
Balcony	3.70x2.90, 7.00x0.95

68.90 m²

Living 52.47 m²
Veranda 16.43 m²

Flat 101

First Floor

101.40 m²

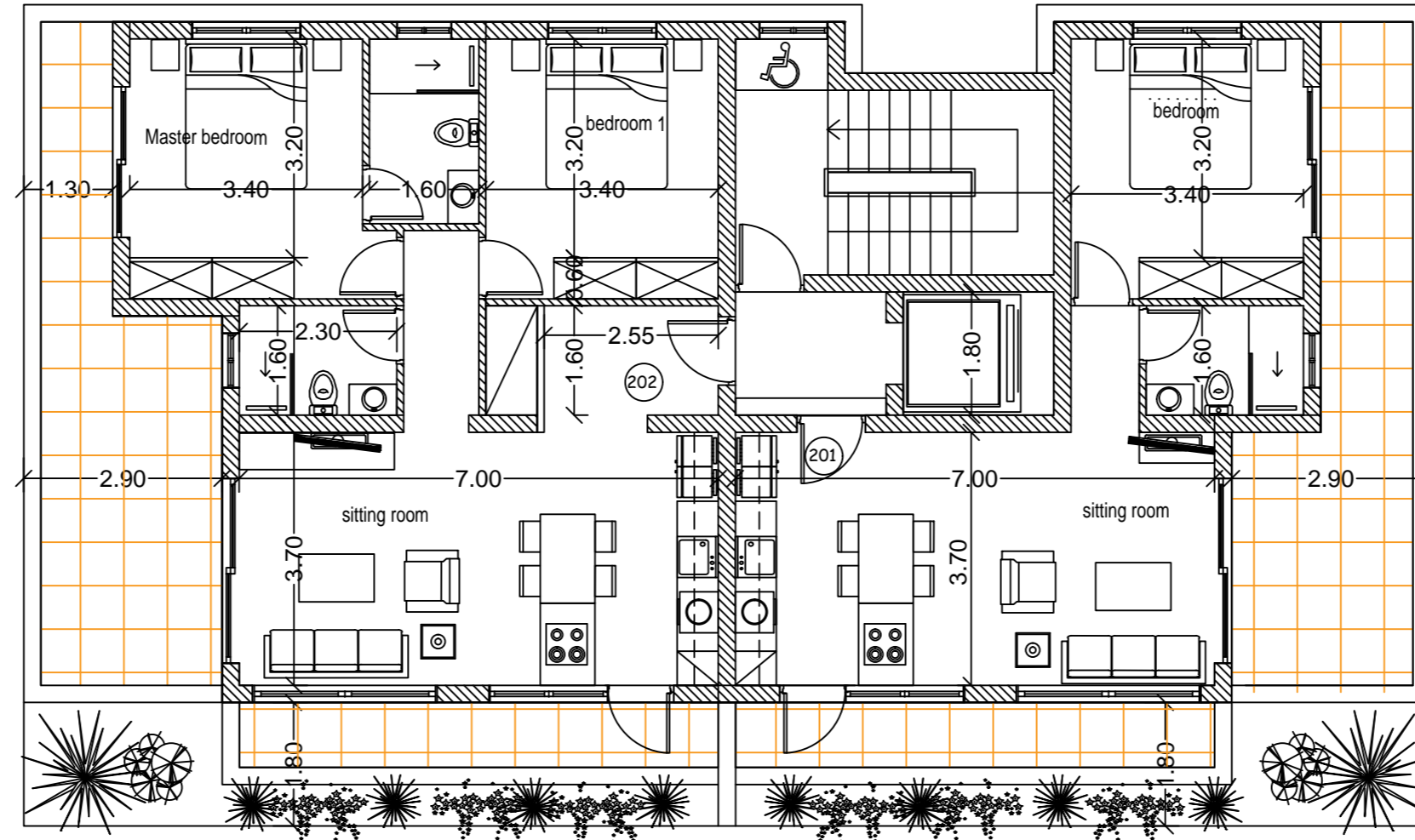
Living 80.48 m²
Veranda 20.92 m²

Flat 202

Second Floor

2 Bedrooms/ 2 Bathrooms Covered Parking

Master Bedroom	3.80x3.40
• En-suite	1.60x2.70
Bedroom 1	3.80x3.40
Living	3.80x3.70
Kitchen & Dining	3.10x3.70
Guest Bathroom	1.60x2.30
Balcony	5.40x2.90, 7.00x0.95



1 Bedroom/ 1 Bathroom Covered Parking

Bedroom	3.80x3.40
Living	3.10x3.70
Kitchen & Dining	3.90x3.70
Bathroom	1.60x2.30
Balcony	3.70x2.90, 7.00x0.95

68.90 m²

Living 52.47 m²
Veranda 16.43 m²

Flat 201

Second Floor

127.80 m²

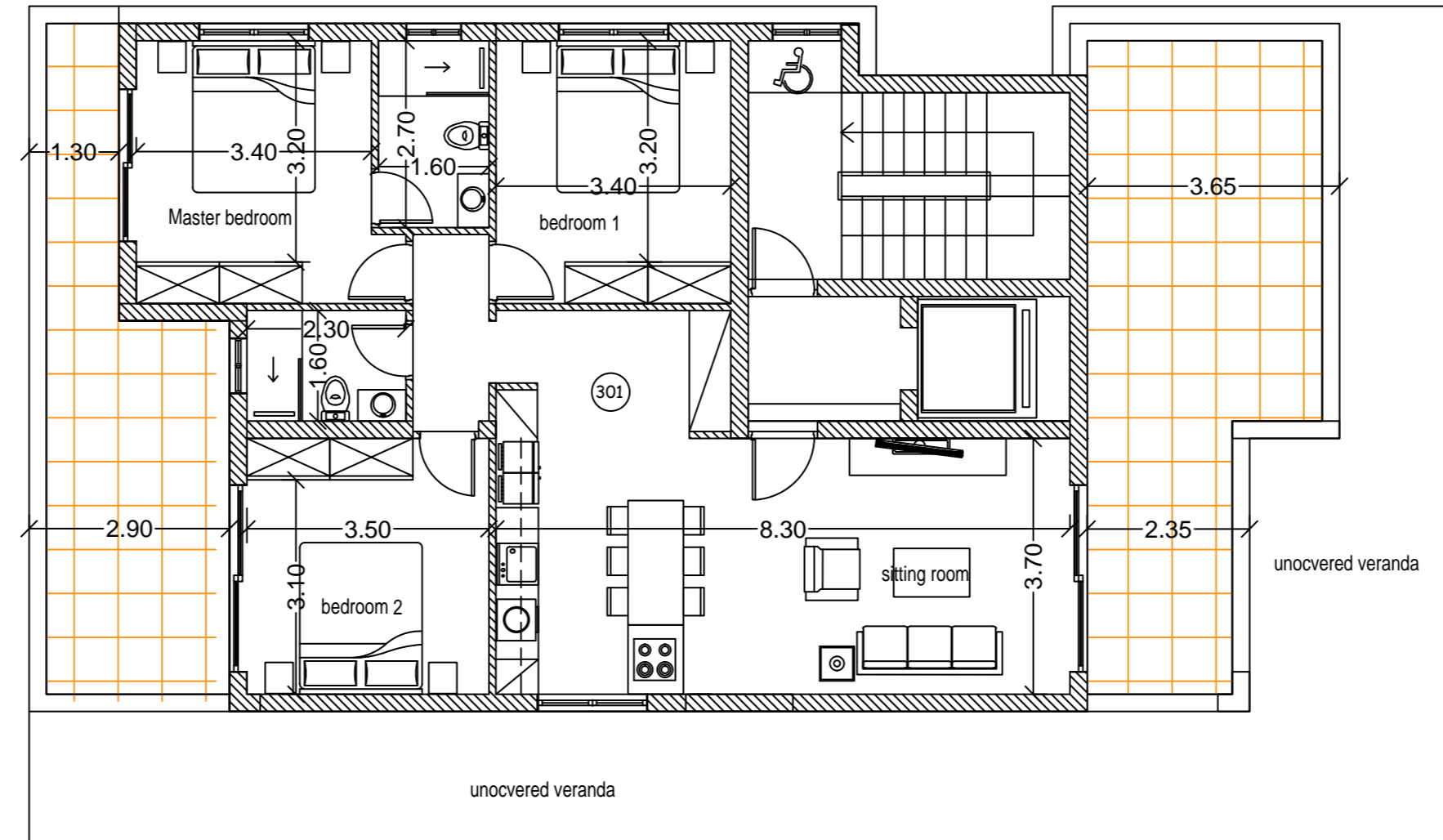
Living 100.73 m²
Covered Veranda 27.07 m²
Uncovered Veranda 21.00 m²

Flat 301

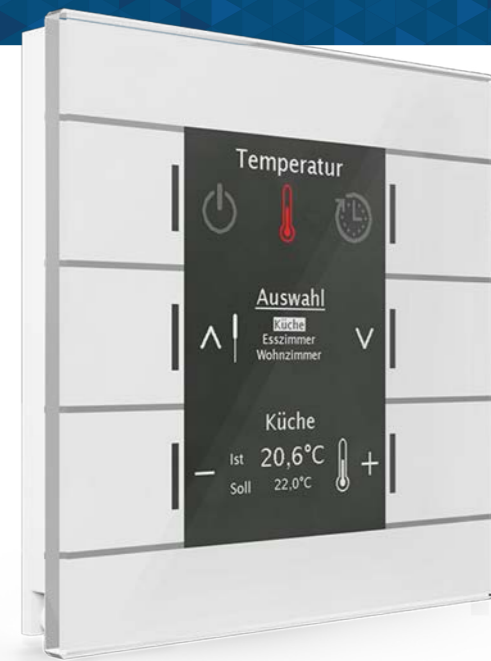
Third Floor

3 Bedrooms/ 2 Bathrooms Covered Parking

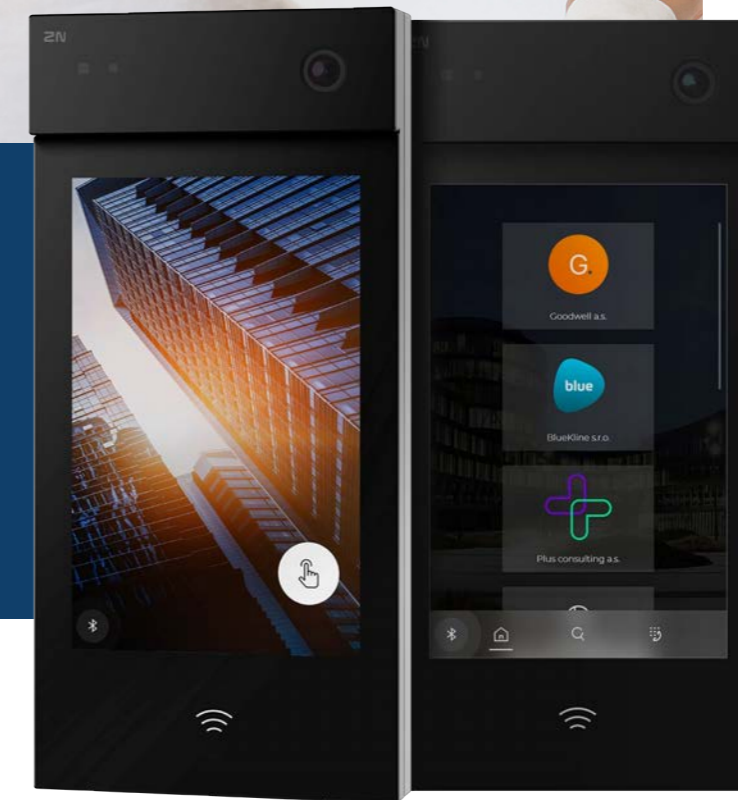
Master Bedroom	3.40x3.80
• En-suite	1.60x2.70
Bedroom 1	3.40x3.80
Bedroom 2	3.50x3.70
Living	4.10x3.70
Kitchen & Dining	4.20x3.70
Guest Bathroom	2.30x1.60



Exclusive Finishes



- ▶ • False Ceiling with recessed spot lights
- Laminate parquet floors in each bedroom
- Spanish porcelain floor tiles all over
- Taylor made floor to ceiling railing wardrobes, externally made of high-quality white MDF panels with mirror
- Provision for security system
- Provision for Air-conditioning
- Designer built-in GROHE sanitary ware
- Wall-mounted GROHE (Germany) shower arm and head
- 2N Video Intercom system
- Glossy Touch Smart Home Keypads (MDT) & Touch panel (Iddero Verso)
- High standard kitchen with soft closing and built-in design made of high quality of oak wood and MDF panels
- Techno granite countertop
- Provision for Double Door American Fridge Freezer
- Thermal & energy efficiency building with grade A
- Rabel or Muskito Patio doors and windows made of externally double-glazed thermal insulation glass and aluminium sliding doors and windows, improving thermal and sound insulation.



- Water pressurize pump
- Solar panels
- Tiled swimming pool
- Factory colour painted aluminium doors & remoted controlled gates
- 10cm inner solid wall bricks
- 25cm outer solid wall bricks
- Provision for Electric cars





► **Invest in Real Assets, No Donations**

Invest at least 300,000 Euros in real estate, and gain from rental income and rising property value, even if you don't plan to live in Cyprus.

Processing application just in 2 months

The whole process can be arranged without being present in the country within 2 months, just one visit for biometric capturing required.

No presence required

It is not necessary to reside in Cyprus, only a visit once every two years is required in order to maintain your residency.

Residency for whole Family

Residency applies to the whole family including children under 25 years.

Eligible for Citizenship after 5 Years

Applicants are eligible to apply for Cypriot citizenship after five years of residence in Cyprus.

Free Healthcare System

Once residency is approved, you'll be eligible for free access to the national healthcare system.

Tax Free Haven

Stay in Cyprus for at least 60 days a year, become a Cyprus tax resident, and benefit from a tax-free program for 17 years.



Benefits
Cyprus Permanent
Residency
with Investment





Chloraka Seaveiew

Recent
Completed
Projects



Elegant Complex



Universal Pearl

Recent
Completed
Projects

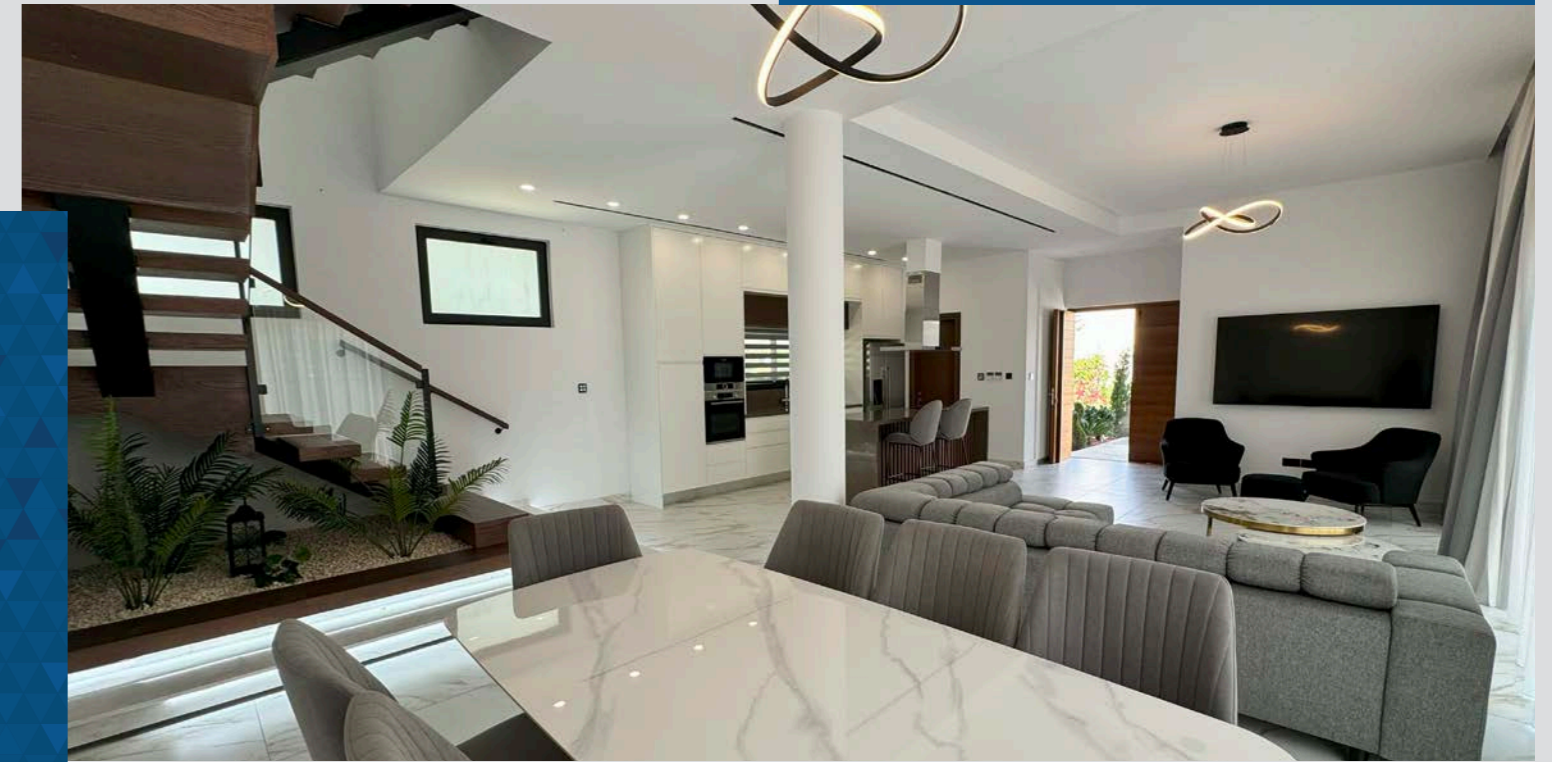


Golden Kings



Elegant Villa

Recent
Completed
Projects



Elegant Villa

Recent
Completed
Projects



Kissos Gem





 HOME
QUALITY

DEVELOPERS

Tafos Ton Vasileon 100, Diamond Complex Block B,
Shop 10-11, Kato Pafos 8015, Paphos, Cyprus

+357 26600215

info@qualityhomeco.com

www.qualityhomeco.com